

Quality is more than a word



Electromigration Evaluation System

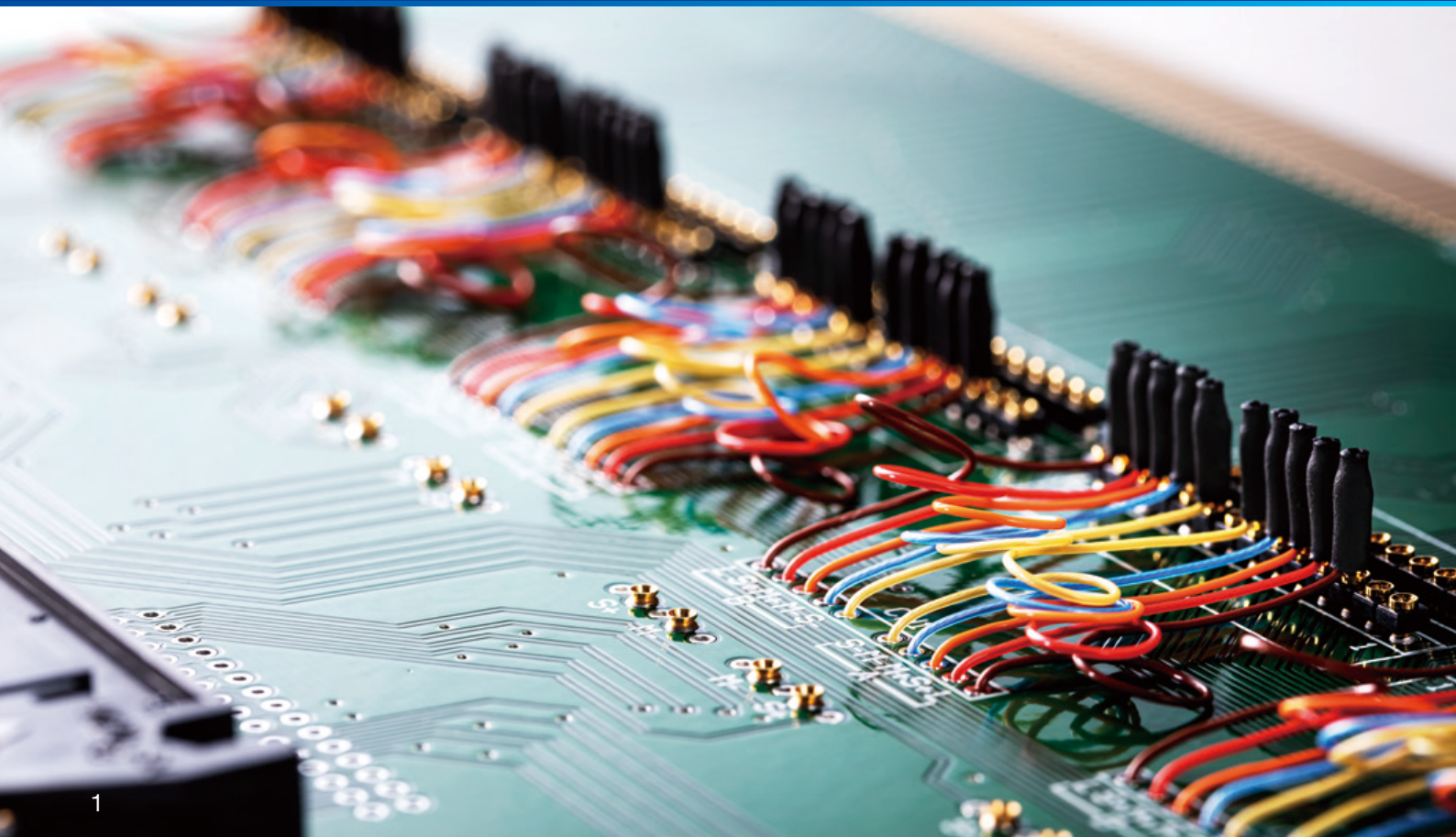
AEM Series



Electromigration evaluation at 350°C

As the miniaturization of semiconductor devices progresses, evaluating electromigration under excessively severe conditions is becoming essential.

The AEM Series Electro-Migration Evaluation System offers accurate measurements based on temperature and current stress — two major factors affecting a device's service life — and analysis software for determining the necessary parameters for judging the life of a device. Designed to meet a wide range of evaluation needs, from cutting-edge evaluations to production management, the AEM Series offers enhanced operability, superior reliability, and simplified data analysis.





Performance



240-channel model

- **240-channel evaluation testing over 3 oven in a single cabinet**

2 channels (DUTs) = 1 Socket
 5 Sockets = 1 DUT Board
 8 DUT boards = 1 Oven
 3 Ovens = 1 Cabinet

Maximum of 80 channels or DUTs can be tested in a single oven, makes it 240 channels per cabinet. The host PC, however, can control upto 1,200 channels or five fully-loaded cabinets.

- **High-accuracy temperature control up to 350°C**

The oven are capable of testing temperatures of up to 350°C and offer highly accurate temperature distributions of $\pm 3.5^\circ\text{C}$ at 300°C. Each oven comes with an independent controller for separate temperature settings.

- **Current stress application up to 200 mA**

The AEM Series is capable of applying stress currents between 0.1 mA and 200 mA.

- **Highly reliable dual-contact board structure (Patent No. 4304189)**

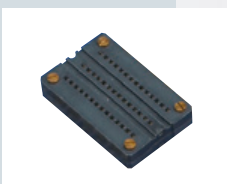
The DUT boards and socket connections feature a dual-contact structure for a stronger hold. ESPEC's proprietary design also prevents the DUTs from disconnecting. This structure design ensures greater reliability for long-term evaluations at high temperatures.

*350°C model sockets (300 mil and 600 mil) equipped as standard. 250°C models (600 mil only) are also available (optional).

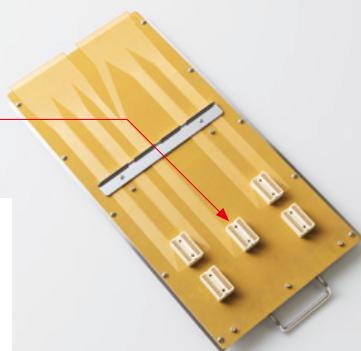


- **DUT board**

IC socket
 250°C model (optional)



350°C model (standard)



DUT board

Size: 220 (W) × 465 (H) × 460 (D) mm
 Weight: About 1.6 kg

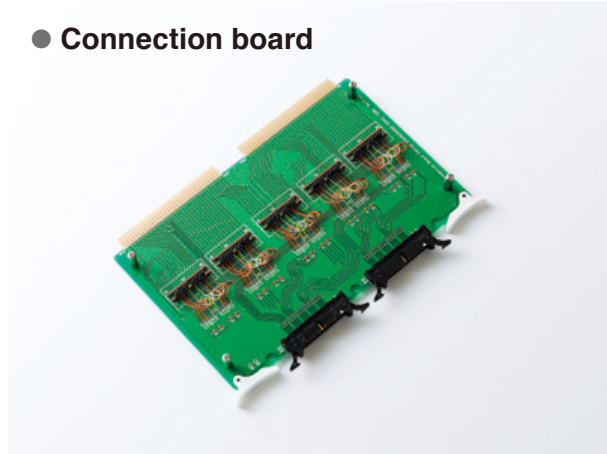
● Connection board

The pin assignment scramble function makes it possible to evaluate ESPEC DUT boards even using DUTs with different pin layouts.

● Four test modes

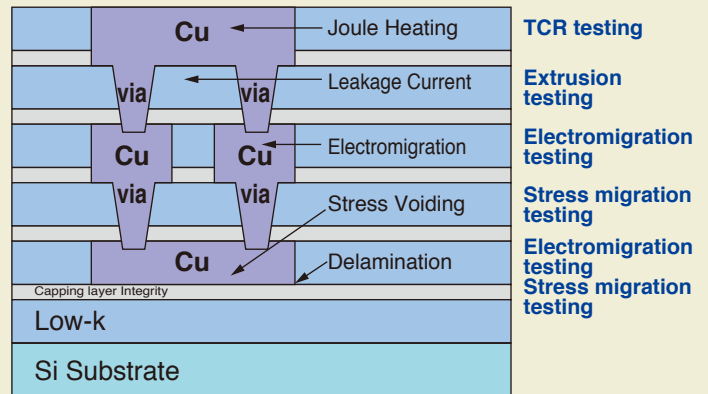
The AEM Series is capable of performing four different tests by measuring resistance while stressing temperature and current:
Electromigration, Stress migration, Temperature characteristic (TCR), and Extrusion.

● Connection board



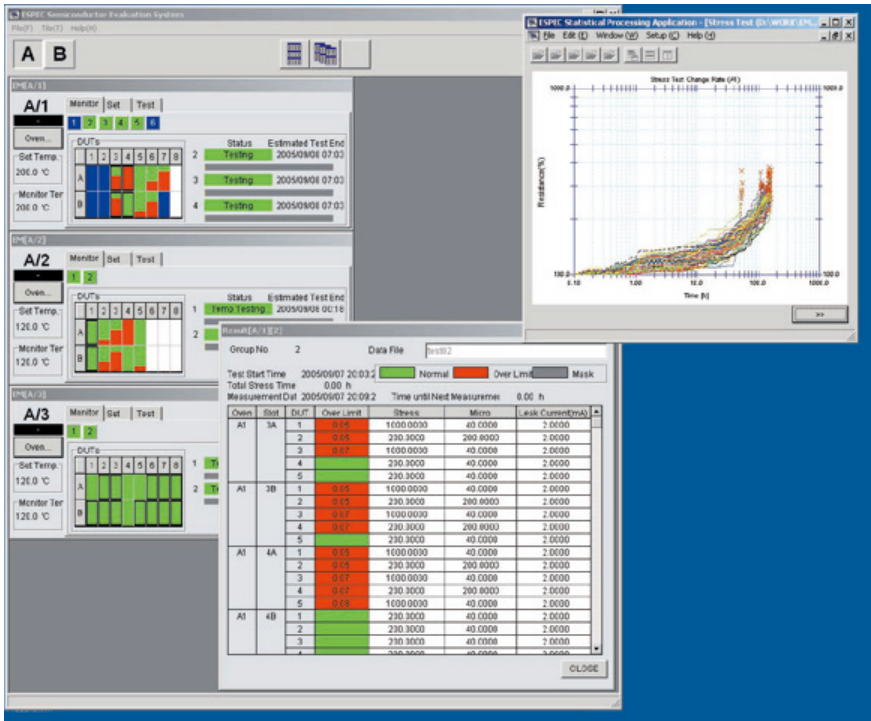
● Reliability concerns for Cu damascene

Cu damascene offers the benefits of low resistance and high reliability, but a wide range of phenomena appear in via structures linking multi-layer wiring when subjected to thermal stress.



SOFTWARE

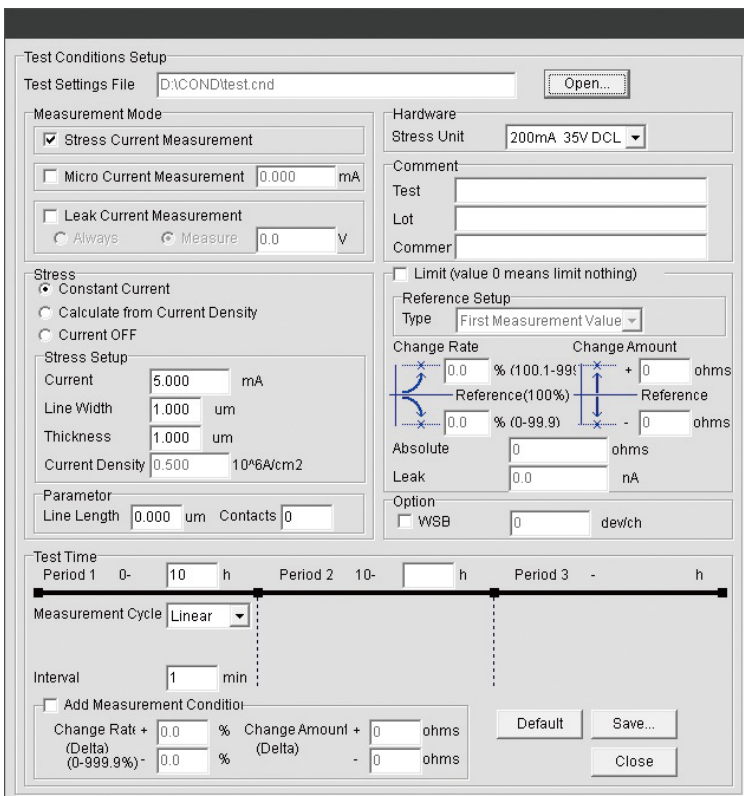
● Monitor screen



The monitor screen offers real-time information on the test progress, resistance, and rate of change of all DUTs at a glance.

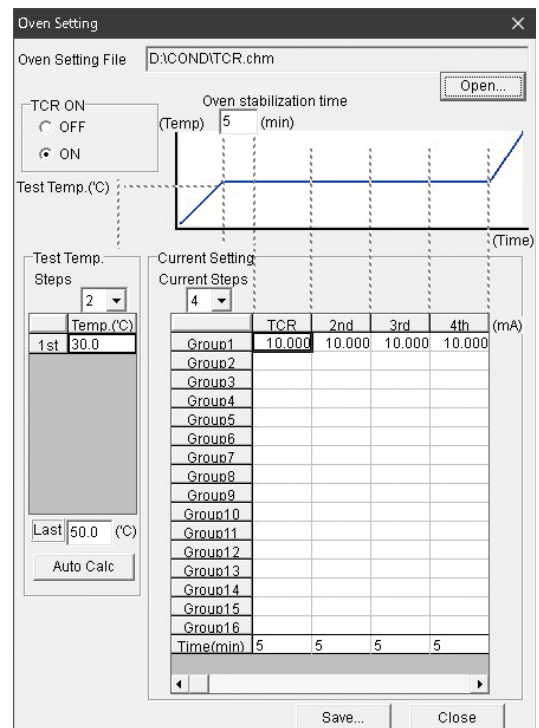
● Condition setting screen

Electrical parameters and time settings can be configured for each DUT.



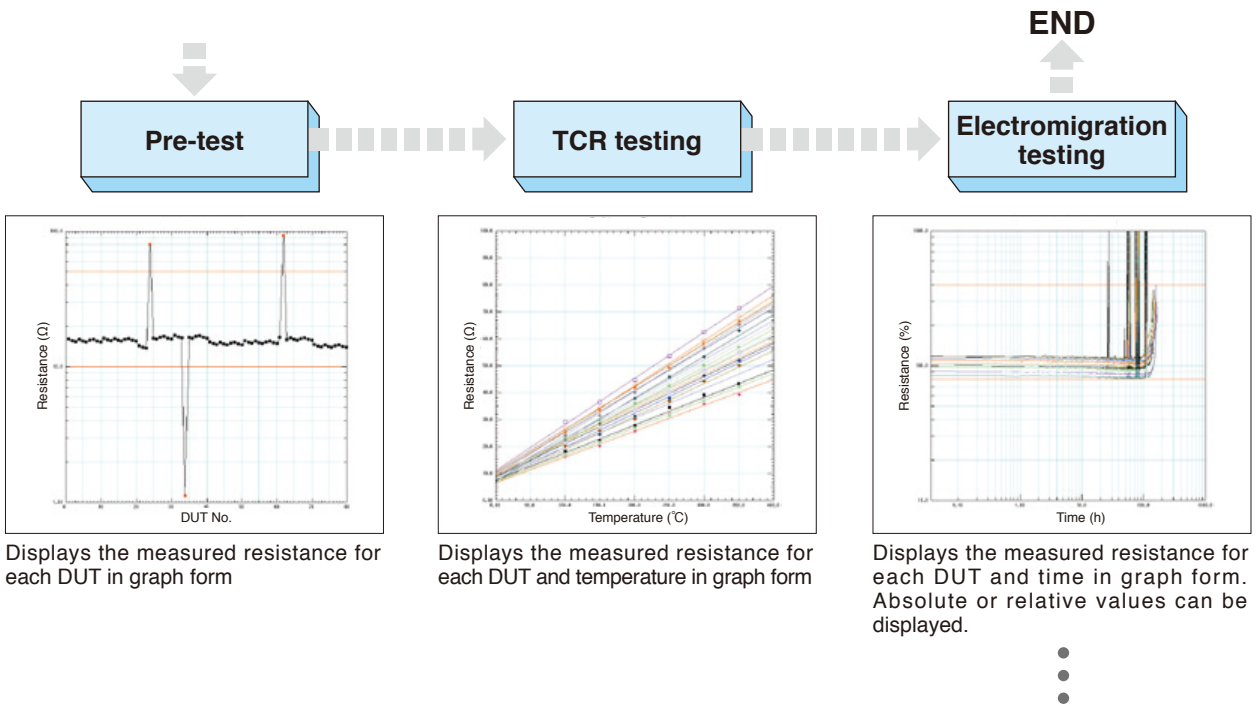
Test condition settings

Temperature characteristic testing parameters and stress testing temperature settings can also be configured.

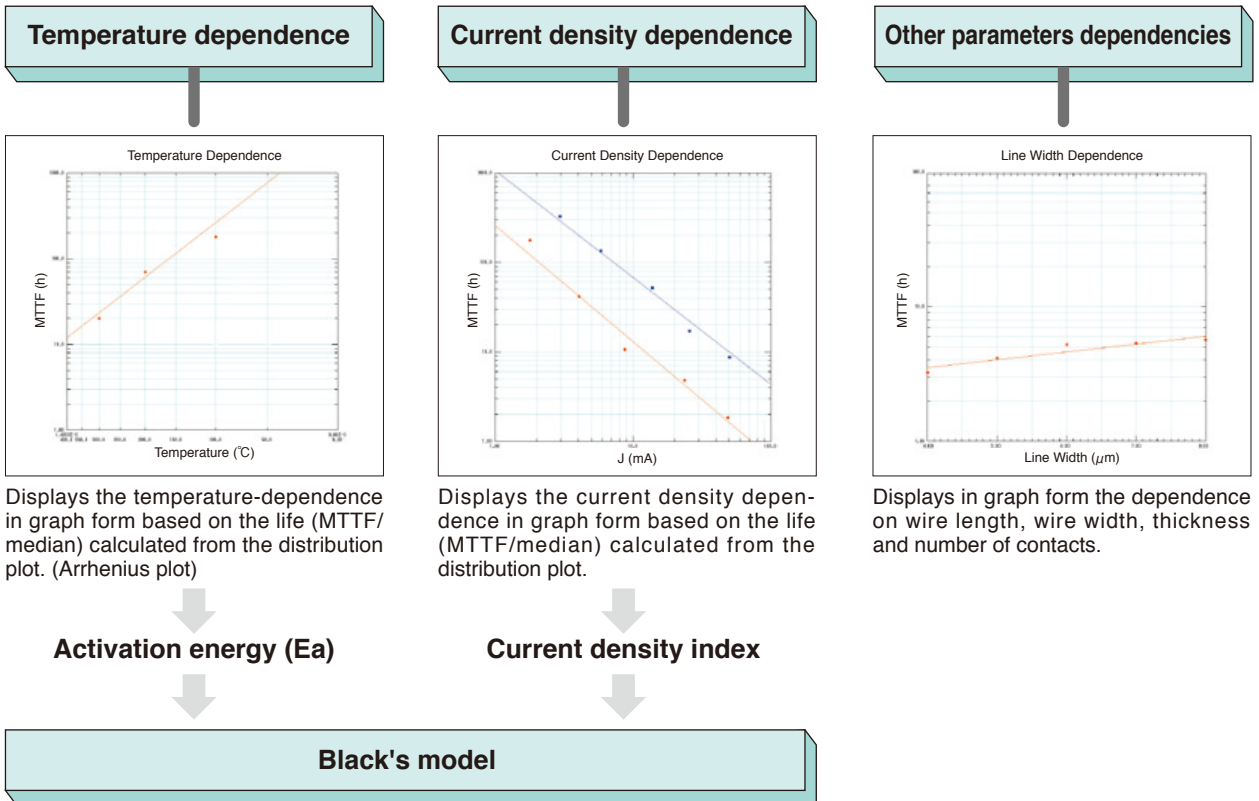


Oven condition settings

ANALYTICAL SOFTWARE



Density dependence plots (Normal/ Log Normal/ Weibull)



SPECIFICATIONS

Evaluation item		<ul style="list-style-type: none"> • Electromigration testing • Stress migration testing • Temperature characteristic (TCR) testing • Extrusion testing
Stress current source	Output range	+ DC, 0.1 mA to 200 mA
	Accuracy	0.1 to 200 mA: \pm (0.3% of set point + 50 μ A)
	Following voltage	35V
Extrusion test voltage	Output range	- 10.0 to -1.0 V / 1.0 to 20.0 V
	Accuracy	\pm (2% of set point + 20 mV)
Oven	Temperature control range	+ 65 to + 350°C
	Temperature fluctuation	\pm 0.5°C (+ 65 to + 350°C)
	Temperature uniformity	\pm 1.0°C (+ 100°C), \pm 2.0°C (+ 200°C), \pm 3.5°C (+ 300°C)

SYSTEM VARIATION

Model		AEM-240C3 AAA	AEM-160C2 0AA	AEM-080C1 00A
EM module output current	Oven 1	200mA	200mA	200mA
	Oven 2	200mA	200mA	—
	Oven 3	200mA		
Number of evaluation channels		240ch	160ch	80ch
DUT board	Number of installed units	24 (8 \times 3 oven)	16 (8 \times 2 oven)	8
	IC socket	5 each per board (DIP 28-pin, 600 mil and 300 mil)		
Power supply		200 V AC, 3-pole, 50/60 Hz (controller), AC 100 V, 1-pole, 50/60 Hz (PC)		
Breaker capacity	200 V (Test unit + Oven unit)	75A(25kVA)	60A(17kVA)	40A(9kVA)
	100 V (Host PC)	6.5A(650VA)		
Oven unit dimensions (mm) ^{*1 *2}		1080 (1131) (W) 1990 (H) 1055 (D)	580 (W) 1360 (H) 1220 (D)	580 (W) 730 (W) 1220 (D)
Test unit dimensions (mm) ^{*2}		580 (W) \times 1942 (2217) (H) \times 1210 (1302) (D)		

*1 Including stand

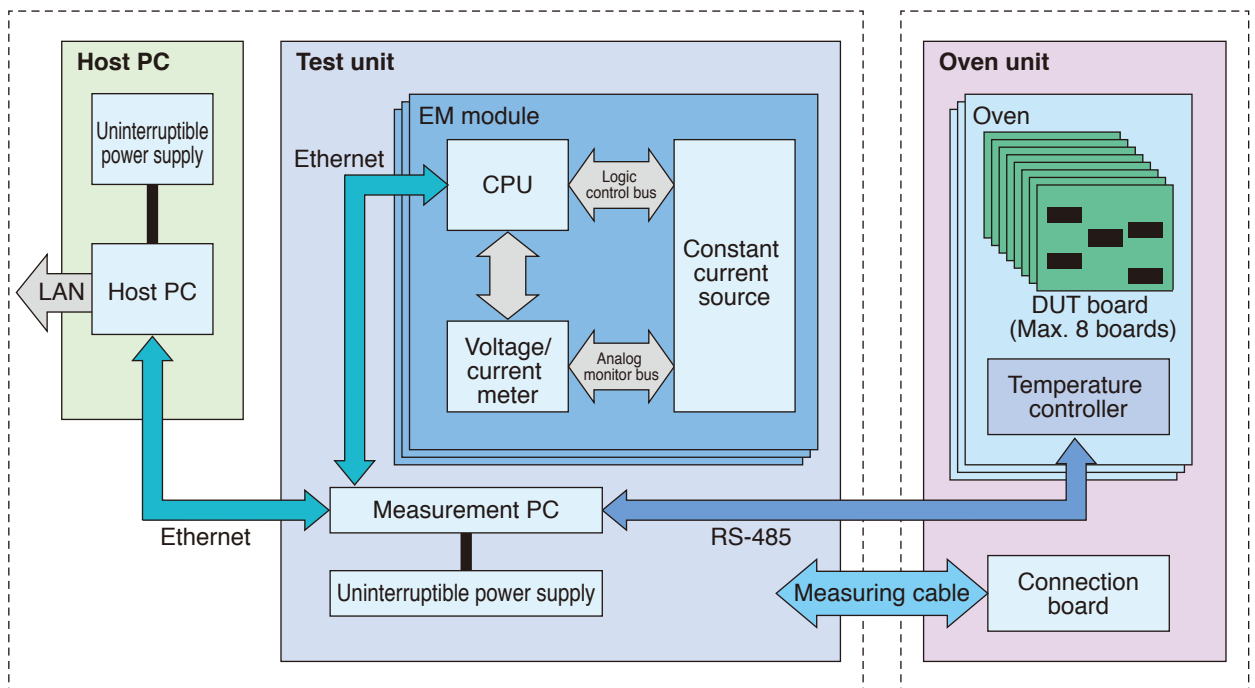
*2 Dimensions in parentheses include protrusions



Safety precautions

- Do not use specimens which are explosive or inflammable, or which contain such substances. To do so could be hazardous, as this may lead to fire or explosion.
- Vapor from specimens that accumulates in tanks or exhaust ducts may ignite and cause fires, so the equipment must be cleaned periodically. Vapor that seeps into and accumulates in equipment insulating layers may cause more serious fires.

SYSTEM BLOCK DIAGRAM



● Host PC

- **Host PC**
Software: Windows OS
Test settings and test monitoring management and data analysis
- **Uninterruptible power supply**
For host PC

● Test unit

- **EM module**
For DUT power control and DUT resistance measurement
1 constant power source supply per channel
- **PC for measurements**
Measurement data aggregation and measurement control
- **Uninterruptible power supply**
For measurement PC

● Oven unit

- **Oven**
Temperature range: +65 to +350°C
- **Connection board**
For DUT board connection;
Includes DUT pin scrambling function.

ACCESSORIES

- DUT board (8 boards per oven)
- Setup CD
- User's manual
- Resistance check board (1 board)

SAFETY DEVICES

- Leakage breaker
- High-low temperature limit alarm
- Burn-out detection circuit
- Stand-alone overheat protector
- PC freeze detection using watchdog timer
- Status indicator light 3 level
- Emergency stop switch (test unit)

OPTIONS

- DUT board
 - + 350°C application model
(same as standard accessory)
 - + 250°C application model (DIP 28 pin / 600 mil)
- Resistance check board
- Additional license for statistical software
- Temperature recorder (100 mm 6-dot type)
- Paperless recorder (externally mounted)
- N2 gas inlet hole
- Step-down transformer (external)

ESPEC CORP. <https://www.espec.co.jp/english>

Head Office

3-5-6, Tenjinbashi, Kita-ku, Osaka 530-8550, Japan
Tel: 81-6-6358-4741 Fax: 81-6-6358-5500

ESPEC NORTH AMERICA, INC.

Tel: 1-616-896-6100 Fax: 1-616-896-6150

ESPEC EUROPE GmbH

Tel: 49-211-361850-0

ESPEC ENVIRONMENTAL CHAMBERS

SALES AND ENGINEERING LTD. STI. (Turkey)

Tel: 90-212-438-1841 Fax: 90-212-438-1871

ESPEC ENVIRONMENTAL EQUIPMENT (SHANGHAI) CO., LTD.

Head Office

Tel: 86-21-51036677 Fax: 86-21-63372237

BEIJING Branch

Tel: 86-10-64627025 Fax: 86-10-64627036

GUANGZHOU Branch

Tel: 86-20-83317826 Fax: 86-20-83317825

SHENZHEN Branch

Tel: 86-755-83674422 Fax: 86-755-83674228

SUZHOU Branch

Tel: 86-512-68028890 Fax: 86-512-68028860

TIANJIN Branch

Tel: 86-22-26210366 Fax: 86-22-26282186

XI'AN Branch

Tel: 86-29-88312908 Fax: 86-29-88455957

CHENGDU Branch

Tel: 86-28-88457756 Fax: 86-28-88474456

WUXI Branch

Tel: 86-510-82735036 Fax: 86-510-82735039

ESPEC TEST TECHNOLOGY (SHANGHAI) CO., LTD.

Tel: 86-21-68798008 Fax: 86-21-68798088

ESPEC ENGINEERING (THAILAND) CO., LTD.

Tel: 66-3-810-9353 Fax: 66-3-810-9356

ESPEC ENGINEERING VIETNAM CO., LTD.

Tel: 84-24-22208811 Fax: 84-24-22208822



QMS
JIS Q 9001
JSAQ 004



MS
CM001



MS
CM021



ISO 9001/JIS Q 9001

Quality Management System Assessed and Registered

ESPEC CORP. has been assessed by and registered in the Quality Management System based on the International Standard ISO 9001:2015 (JIS Q 9001:2015) through the Japanese Standards Association (JSA).

* Registration : ESPEC CORP.
(Overseas subsidiaries not included)

ISO 14001 (JIS Q 14001)

Environmental Management System Assessed and Registered

ESPEC CORP.
(Overseas subsidiaries not included)