

SHOCK TOWER

PDST-230

Shock Testing System PDST-230

PDST-230 is a new shock testing system with compact design that is well suited for applying mechanical shock test to smartphones, tablets, computers and other mobile devices.

This new shock machine meets a wide range of requirements for shock testing and with a compact size is easily installed in various locations.

Features

- Specialized for High Acceleration up to 30,000G
with Dual Shock Amplifier, HGP-150*
 - Compact Built (Body Height : 1800mm)
 - Safety Fence Included
 - High Reproducibility
 - Multi-shock pulse generator equipment as standard
 - Easy-to-Use Settings via touch panel controller
- *Specification of applicable shock pulse is still being confirmed.

Specification*¹

Model	PDST-230
Table size	230 × 230 mm
Test sample weight	Up to 20 kg
Shock acceleration range (Standard)	10 to 1,000 G (with Multi-shock pulse generator)
(optional)* ²	Up to 30,000 G (with HGP-150)
Pulse duration range (Standard)	3 to 20 ms (with Multi-shock pulse generator)
(optional)* ²	0.2 to 1 ms (with HGP-150)
Velocity change range	3 to 15 m/s
Shock waveform	Half sine pulse
Test machine dimensions (W × D × H)	650 × 800 × 1800 mm
Test machine weight	Approx. 1500 kg
Electrical power supply	AC100-240V, 50/60 Hz, single phase
Air supply	0.8 MPa or more
Control system	Touch panel controller
Shock measurement system (optional)	Shock manager SM-500

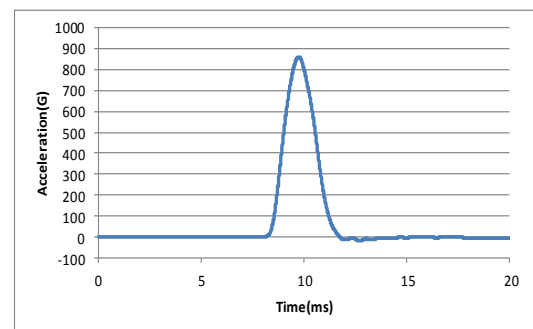
*¹ This model is still under development. Specifications on this catalog might change without prior notice.

*² with application of optional dual shock amplifier model HGP-150.

Detailed specification of applicable shock pulse is still being confirmed.



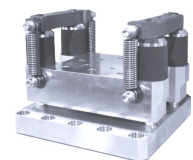
PDST-230 body



Sample shock pulse



Shock Manager



HGP-150



SHINYEI TESTING MACHINERY CO., LTD.

Head Office B47-11, Katoridai, Tsukuba, Ibaraki, 300-2657, JAPAN
Tel: +81-29-848-3571 FAX: +81-29-848-3572

International Sales Office
Shinyei BLDG. 5F, 77-1 Kyomachi, Chuo-ku, Kobe 651-0178, JAPAN
Tel: +81-78-392-6903 FAX: +81-78-332-1619

Malaysia Office
No313.LOT2557,6 1/2MILES,JALANSKUDAI,81200 JOHORBAHRU,JOHOR,MALAYSIA
Tel: +607-235-1459 FAX: +607-238-6022

Shock Specification of PDST-230

Shock Testing System PDST-230

Multi-shock pulse generator^{*1}

Programmer No.	No.1	No.2
Peak acceleration (G)	10 to 120	50 to 1,000
Shock Duration (ms)	9 to 20	3 to 9

*1 Standard equipment selectable one of 2. Optional purchase if you need both.

Single Programmer^{*2}

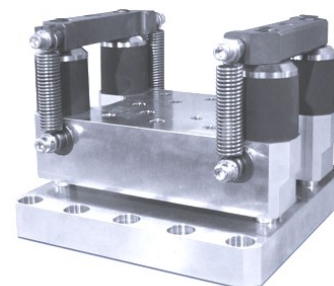
Peak acceleration (G)	915 to 2,000	450 to 2,300	150 to 800
Shock Duration (ms)	0.5	1	3

*2 Optional for each programmers that fixed shock duration.

Dual Shock Amplifier HGP-150^{*3}

Peak acceleration (G)	10,000	30,000
Shock Duration (ms)	0.2	0.08

*3 Optional Amplifier Detailed specification of applicable shock pulse is still being confirmed.



HGP-150

Multi-shock pulse generator

Shock duration can generate various shock durations with the single programmer by changing the height of thickness of cushion programmer.



SHINYEI TESTING MACHINERY CO., LTD.

Head Office B47-11, Katoridai, Tsukuba, Ibaraki, 300-2657, JAPAN
Tel: +81-29-848-3571 FAX: +81-29-848-3572

International Sales Office
Shinyei BLDG. 5F, 77-1 Kyomachi, Chuo-ku, Kobe 651-0178, JAPAN
Tel: +81-78-392-6903 FAX: +81-78-332-1619

Malaysia Office
No313.LOT2557,6 1/2MILES,JALANSKUDAI,81200 JOHORBAHRU,JOHOR,MALAYSIA
Tel: +607-235-1459 FAX: +607-238-6022