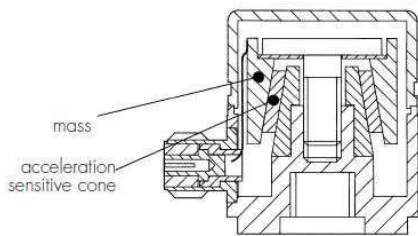


DJB Instruments

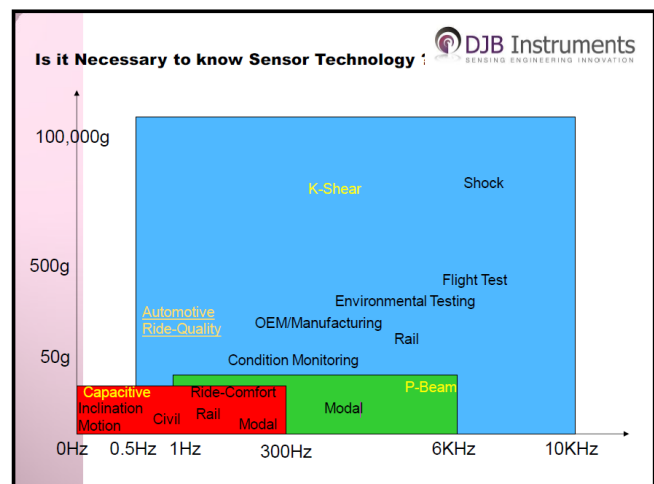
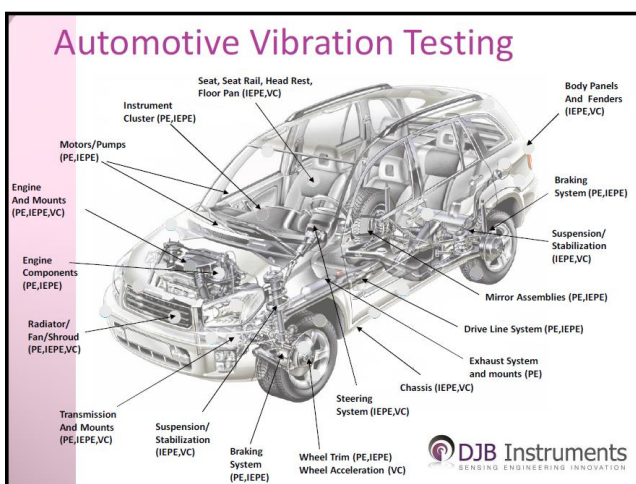
DJB Instruments (UK) Ltd has been manufacturing accelerometers, cables, instrumentation, and accessories for over 40 years.

When choosing a DJB product you are selecting excellence in design, engineering and manufacturing, backed up by a technical and customer support team with extensive applications experience to ensure you get the advice you need from enquiry to application and beyond.

Home of the Konic Shear® Accelerometer Don Birchall introduced and patented the Konic Shear® design back in the 1970's and it remains at the heart of the DJB product range today. Offering improved performance and reduced cross axis error, the Konic Shear® accelerometer remains at the pinnacle of accelerometer design.

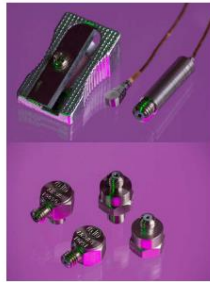


- KONIC shear design (UK pat. 1507251)
- Comprising a truncated hollow piezoceramic cone, spigot, and concentric reaction mass.
- Provides virtual isolation of the sensing element from mounting induced strain.
- Minimal cross axis error deriving from its radial symmetry.
- High resonant frequency.
- Long life, rugged design.



Product range

- **IEPE Voltage output**
- JFET low noise IEPE circuitry
 - Worlds smallest - Ultra miniature A/128/E – 0.19grams, 5.7mm x 2.3mm x 3.5mm stainless steel, repairable with L8 connector unique to DJB
 - Largest – A/1800 Seismic high sensitivity 10V/g
 - Full range of miniature and general purpose IEPE accelerometers



- **IEPE/Charge Triaxial**
 - Modal clip mounted AT/13, AT/11 and A/136
 - Single Connector miniature and general purpose. AT/10, AT/14
 - All with individual sensing elements for each axis, improved life, more robust.
 - Repairable individual sensor triaxials. - A/34, A/31, A/30

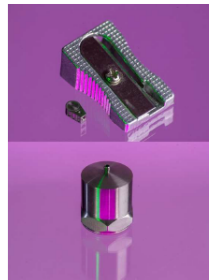


DJB Unique products

- **AT/04 and AT/01 PE charge triaxial accelerometers with single 4 pin connector**
 - Only manufacturer in the world to offer single 4 pin connector version of PE charge output triaxial accelerometers
 - AT/04 – General purpose (available as adhesive or tapped base) – New design with centralised connector.
 - AT/01 – miniature (available as adhesive or tapped base)
 - Specialist low noise multi core cable made just for these accelerometers – ET25-LN



- **Piezoelectric Charge output**
- Fully welded construction
- High temperature, very robust solutions
- PZT ceramic for excellent temp. stability
 - Smallest - Ultra miniature A/28/E – 0.19grams, stainless steel, repairable with L8 connector unique to DJB
 - Largest – A/800 Seismic high sensitivity 9000pC/g



- **High Shock IEPE Accelerometers**
 - 10,000g – A/161
 - 25,000g – A/162
 - 50,000g – A/163
 - M5 stud or M6 stud mounting
 - Built in filters to remove high frequency vibration.
 - Fast response electronics



- **Impedance Head**
 - For force and acceleration measurements at a single point
 - Modal shaker installations
 - AF/50/5
 - 50mV/g Acceleration
 - 5mV/N Force
 - AF/100/10
 - 100mV/g Acceleration
 - 10mV/N Force



- **Instrumentation**

- **IEPE Amplifiers**
 - CV9-V – 9 channel IEPE only, simplified gain x1, x10, x100
 - CV1-V – single channel, available with filters.
 - VB/01 – simple battery powered IEPE supply
 - VB/02 – simple battery powered IEPE with gain x1/x10



- **Instrumentation**
 - In line Charge Converters
 - Compact designs, lightweight.
 - QV/02 – 10/32 microdot input/BNC output
 - QV/04 – 10/32 microdot input/10-32 microdot output
 - Gains available: 0.1, 1, 10
 - Custom gain settings available



- **IEPE Impact Hammers**

- IH-01 - 50N range
- IH-01 - 200N range
- IH-02 - 2kN range
- IH-05 - 5kN range
- IH-10 - 10kN range
- IH-20 - 20kN range
- IH-50 - 50kN range



- **Handheld Vibration Meter**

- **VSI Vibratest**

- Complete kit
- A/V/D peak or RMS
- Stores up to 100 readings
- Bearing analysis
- Universal charger included



- **Full range of accessories**

- Mounting accessories
 - Isolated mounting studs, range of stud sizes
 - Isolated mounting magnets
 - Non-isolated mounting studs
 - Petrowax
 - Mounting clips
 - Triaxial mounting blocks
- Cable joiners
 - Range of joiners to connect cables
 - Inline and bulkhead type



- **Water cooled triaxial accelerometers for turbo and exhaust testing - 900°C - A/33 (charge), A/133 (IEPE)**

- Industry standard for many exhaust manufacturers
- Been used for more than 25 years with established performance history
- No other global manufacturer can supply anything like it.
- Raised base to allow machining to fit curved surface.



- **Ultra miniature monoaxial accels, A/28 (charge) and A/128 (IEPE)**

- Fully stainless steel and welded construction, more robust than competitor aluminium options.
- Removeable cable for ease of repair



TEDS is now an option on DJB IEPE sensors

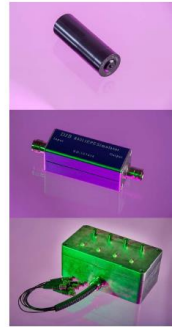
- **Handheld Calibrator VC-01**

- 1grms output
- 159.2Hz
- Battery powered
- Auto shutdown

- **IEPE Sensor Simulator**

- **Junction Boxes/patch panels**

- Custom made to customer requirement



- **Cable Assemblies**

- Stock cable lengths with popular connectors include:
 - 3m/5m cable Non low noise BNC to Microdot
 - 3m/5m cable Low noise BNC to Microdot
- Any cable length made to order
- Over 40 cables held in stock
- Over 15,000 connectors in stock
- Cables for Triaxial accelerometers
- Cables will fit competitor accelerometers



- **Unique Water Cooled for turbo and Exhaust testing**

- Fully Integrated sensors and cooling
- Triaxial or Monoaxial
- 900°C surface temp. IEPE (A133)
- 900°C surface temp. Charge (A33)
- Flat or curve mount
- Vehicle Installation
- Pipes and pumps available from DJB
- High temp. stainless steel HL cables available.

